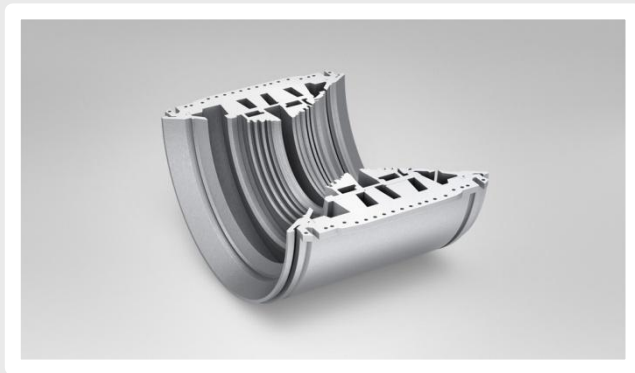
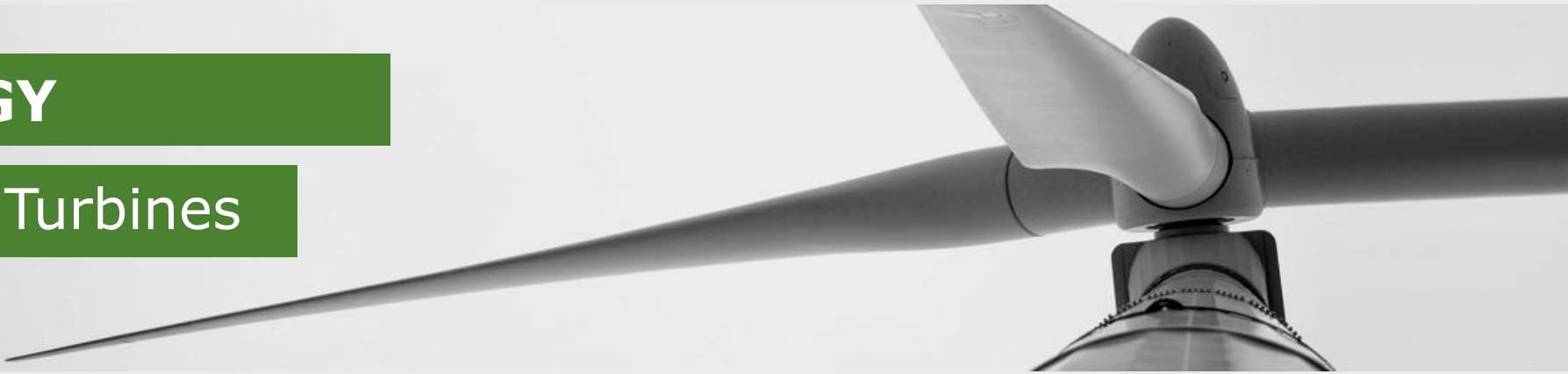


ENERGY

Steam Turbines



Housings

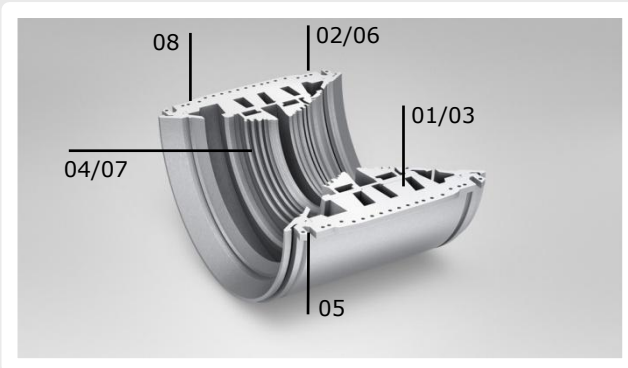


Thermal Shafts



Turbine Blades

Solutions for turbine housings



03 Walter steam tight cutter for finishing joint faces



06 Walter MODCO® back spot facing tool for machining of counter bores



01 Walter heavy duty milling cutter F2265 for rough machining of joint faces



04 Walter Cut Capto™ for grooving blade and sealing grooves



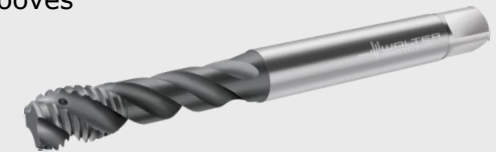
07 Walter Xtra-tec® side milling cutter F4253 for opening blade and sealing grooves



02 Walter Xtra-tec® Insert Drill B4213 for drilling of core holes

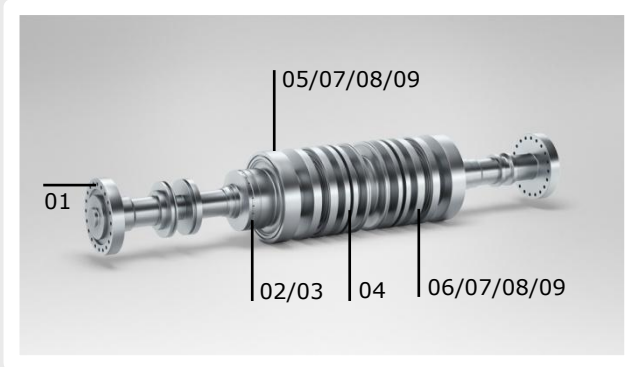


05 Walter Xtra-tec® porcupine cutter F4238 for shoulder and slot milling



08 Walter Prototyp Paradur® Eco Plus for tapping

Solutions for thermal shafts



03 Walter Prototyp Paradur® Eco Plus for tapping



04 Walter Cut Capto™ for machining radial grooves



01 Walter MODCO® back spot facing tool for machining of coupling counter bores



05 Walter bell cutter for roughing of curved fir tree slots



02 Walter Titex X-treme plus for manufacturing of balancing holes



06 Walter disc cutter for roughing of straight fir tree slots



07 Walter indexable form cutter for roughing and semi-finishing of fir tree slots

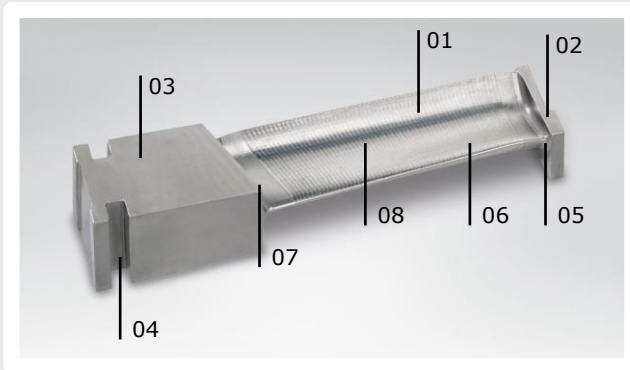


08 Walter indexable form cutter for finishing of fir tree slots



09 Walter Prototyp solid carbide and HSS form cutters for semi-finishing and finishing of fir tree slots

Solutions for steam turbine blades



01 Walter copy mill F2334R for roughing root, shroud and airfoil



02 Walter Prototyp Protostar N50 Tough Guy for finishing the shroud



03 Walter Octagon finishing cutter for finishing the root



04 Walter Prototyp Protomax™ ST for machining the connecting slots



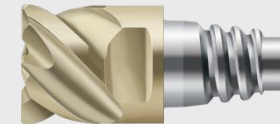
05 Walter Prototyp 30 ball nose cutter for roughing the transition areas



06 Walter Xtra·tec® F4042R shoulder milling cutter for semi-finishing the airfoil



07 Walter Prototyp conical ball nose cutter for finishing the transition areas



08 Walter Prototyp ConeFit™ Protomax ST for finishing the airfoil