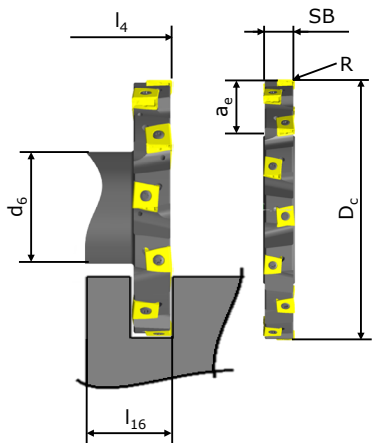


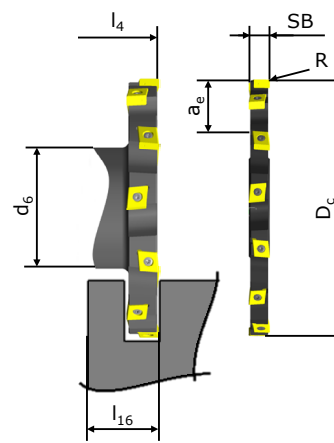
Company	Customer number
Contact person	
Address	
ZIP-Code / City	
Telephone	Fax
E-Mail	

To:  
**Walter Sales company**

<b>Scale quantities:</b>	<b>1</b>	<b>2</b>	<b>3</b>	<b>4</b>	<b>5</b>	<b>10</b>	<b>20</b>
<b>Workpiece data:</b>							
<b>workpiece material:</b>				<b>roughing</b>			
<b>tenacity / hardness:</b>				<b>finishing</b>			
<b>specific features:</b>							
<b>Tool data:</b>							
<b>F 4253 (Xtra-tec®)</b>				<b>F 2253</b>			



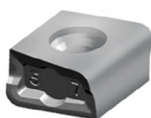
$l_4 =$  [mm]  
 $l_{16} =$  [mm]  
 $D_c =$  [mm]  
 $d_6 =$  [mm]  
 $a_e =$  [mm]  
 $SB =$  [mm]  
 $R^{*1} =$  [mm]  
 $Z^{*2} =$



**D<sub>c</sub>-range:**  
 80mm bis 350mm depending on arbour type and size

**D<sub>c</sub>-range:**      **SB<sub>min</sub>**  
 80-180mm    11-30mm  
 180-350mm    12-30mm

**D<sub>c</sub>-range:**  
 80mm bis 350mm depending on arbour type and size



LN..0804  
 LN..1005  
 LN..1206  
 LN..1608

possible insert size depends on dimension SB



CN..0805  
 CN..1206  
 CN..1608

<sup>1</sup>possible values of corner radius only of stock inserts

<sup>2</sup>Max. z depends on D<sub>c</sub> and insert size

**comments:**

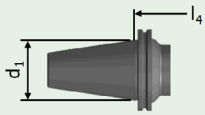
Shipment of the tool within 3 weeks from Germany. Additional information about Walter Xpress you will find at [www.walter-tools.com](http://www.walter-tools.com)

**Adaption:**

**SK DIN 69871**

**size  $d_1$ :**

30  
40  
50



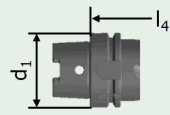
**adaption type:**

A AD MAS BT  
B AD/B ANSI CAT

**HSK DIN 69893**

**size  $d_1$ :**

50  
63  
80  
100



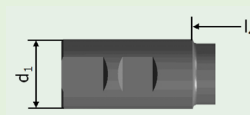
**adaption type:**

A C

**cylindrical shank DIN 1835**

**size  $d_1$ :**

40  
50



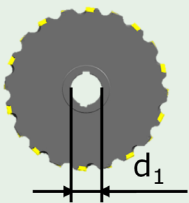
**adaption type:**

A B

**cylinder bore with slot DIN138-L**

**size  $d_1$ :**

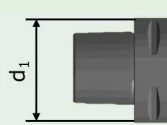
16 32  
22 40  
27 50



**Capto**

**size  $d_1$ :**

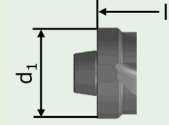
C5  
C6



**NCT**

**size  $d_1$ :**

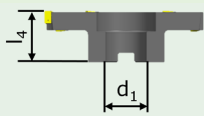
63  
80



**cylinder bore DIN138-A**

**size  $d_1$ :**

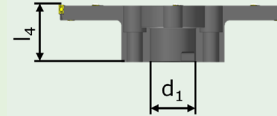
16 32  
22 40  
27 50



**cylinder bore DIN138**

**size  $d_1$ :**

ISO30B  
ISO40B  
ISO50B  
ISO50/60BB



**\*1 Limit depends on insert size**

If it is possible, add drawing of unmachined and machined part

After testing your inquiry on technical feasibility, you get immediately an answer.

No inner coolant possible!

If the tool cannot be processed as Xpress, it will be processed as special tool with a longer delivery time.

**comments:**

Shipment of the tool within 3 weeks from Germany. Additional information about Walter Xpress you will find at [www.walter-tools.com](http://www.walter-tools.com)

All fields with light green background are necessary for tool design. All additional definitions are optional.